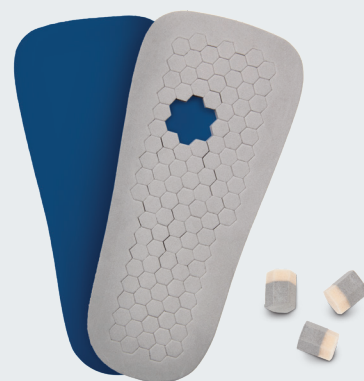
 PW Series
Off-loading Insole

PTQ Series Off-loading Insole



PQ Series Off-loading Insole



PW Series Off-loading Insole



PegAssist™

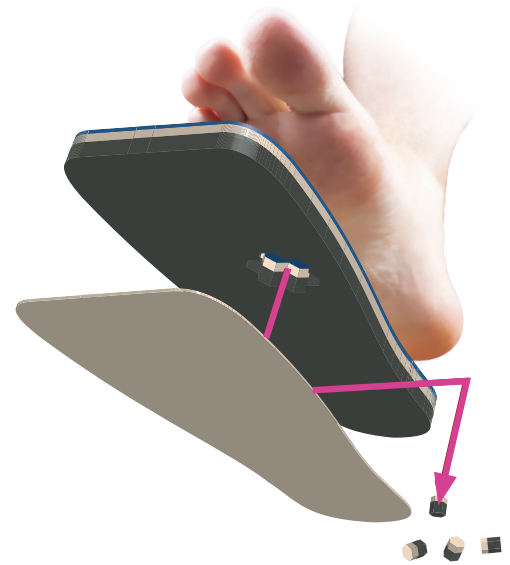
**PQ, PTQ, & PW Series
Off-loading Insoles**

 DARCO

The DARCO PegAssist™ Off-loading Insoles feature a multi-indication removable peg chassis that effectively off-loads the plantar aspect of the foot after surgery or when wounds are present.

The Benefits

- › Removable pegs allow for localized off-loading of wounds and ulcerations of the foot.
- › Pressure is reduced by as much as 60% while allowing patient to remain ambulatory.
- › Each insole has a 15mm combination Plastazote® and Multi-Foam base with a 3mm Poron® cover.
- › PORON® Cushioning cover eliminates the incidence of ring edema and edge abrasion.
- › Stabilizer board included to maintain product integrity.



Indications

- Off-loading
- Wound Care Management
- Pain Management
- Foot Trauma
- Post-Op Treatment

Contraindications

- Open fractures



Bilateral



Diabetic Insole

PQ Series Insole

Size Chart

The PQ Series PegAssist™ is designed to fit the HeelWedge™, OrthoWedge™, APB™, SlimLine™, and DUO™.

Compatible shoes | HeelWedge™ (HQ), OrthoWedge™ (OQ), APB™ (APQ), SlimLine™ (SLQ), DUO™ (DS)

Size:	Women:		Men:	Product Code
XS	3 - 5.5	-		PQ0
S	6 - 7.5	5 - 6.5		PQ1
M	8 - 9	7 - 8		PQ2
L	9.5 - 11	8.5 - 10		PQ3
XL	11.5 - 13	10.5 - 12.5		PQ4



Without PegAssist™

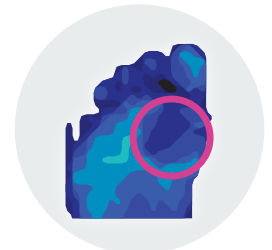
PTQ Series Insole

Size Chart

The PTQ Series PegAssist™ Insole is designed to fit the DARCO Square-Toe MedSurg™ Shoe.

Compatible shoes | MedSurg™ (MQ)

Size:	Women:		Men:	Product Code	
				Women:	Men:
S	4 - 6	6 - 8		PTQW1	PTQM1
M	6.5 - 8	8.5 - 10		PTQW2	PTQM2
L	8.5 - 10	10.5 - 12		PTQW3	PTQM3
XL	-	12.5 - 14		-	PTQM4



With PegAssist™

PW Series Insole

Size Chart

The PW Series PegAssist™ is designed to fit most standard walkers. Affixed to the stabilizer board is a low profile molded hook strip that adheres to the walker liner to prevent shifting while walking.

Compatible shoes | FX Pro™ (FX, FXS)

Size:	Women:		Men:	Product Codes:
XS	3.5 - 6	-		PW0
S	6.5 - 9	5 - 7.5		PW1
M	9.5 - 12	8 - 10.5		PW2
L	12.5+	11 - 13		PW3
XL	-	13.5+		PW4

